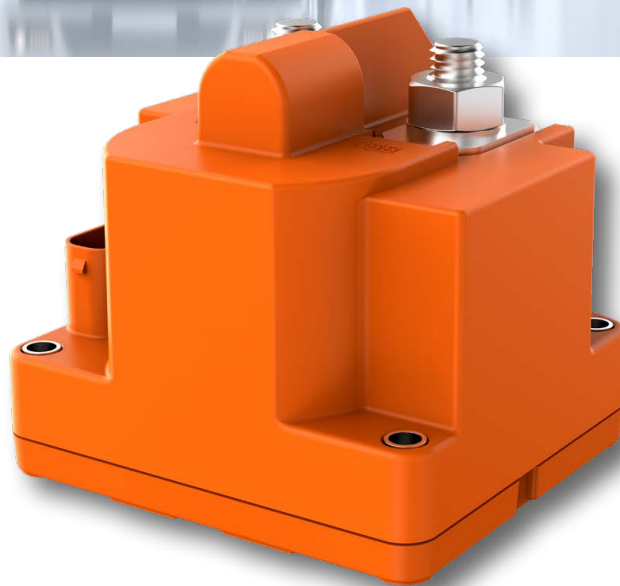


HVR10 – high voltage relay up to 1000 V For the electrified power train



HVR10 – high voltage relay

The most powerful high voltage relay up to 1000 V

The **HVR10** is a hybrid and powerful high voltage relay in a compact design. It combines physical isolation of an electro-mechanical contact with the capabilities of ultramodern semi-conductor technology.

The hybrid, arc-free switching system ensures repeated and reliable disconnection, even in the event of an overload, of up to 2 megawatts – 2,000 A/1,000 V. The **HVR10** withstands high short circuit currents up

to 5,000 A until the fast fuse trips. The fist-sized unit can switch and permanently process 300 A up to 100,000 times, arc-free and wear-free. The innovative self-monitoring function immediately signals critical operating conditions to the controlgear.

Typical applications

- Buses, trucks, construction machinery and special vehicles with electrical power train
- Charging stations, power storage and main relays in the vehicle

Standards

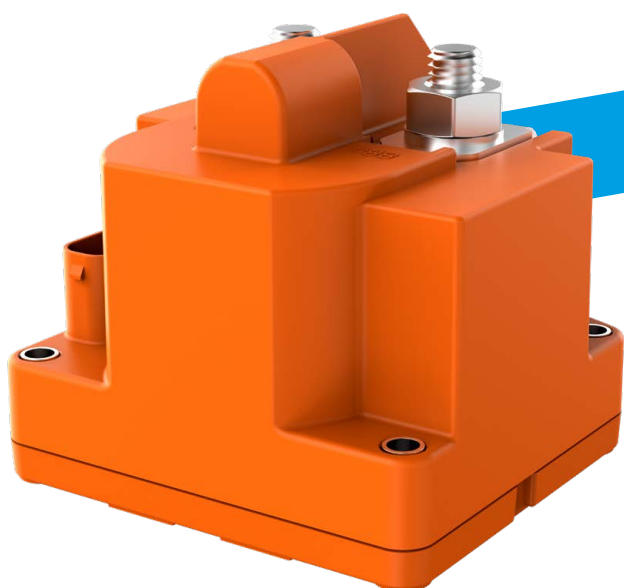
- ISO 16750
- IATF 16949
- ECE R10
- ASIL upon request

Technical data

Voltage rating	DC 900 V
Max. voltage	1,000 V DC
Continuous current	300 A
Rupture capacity $I_{max\ off}$	2,000 A
Max. holding current	5,000 A for 25 ms
Degree of protection	IP54
Ambient temperature	-40 °C ... +85 °C

Your benefits

- **Reliable disconnections** even in critical conditions up to 2,000 A at 1,000 V
- **High protection of the on-board electrical system** through integral fault detection and indication
- **Long life-span** through arc-free switching



Available in
April 2020



F_HVR10_e_040319A

Technical changes, misprints and errors reserved.
Photos: E-T-A, © DKcomposing/stock.adobe.com, © Petair/Fotolia.com, © Getty Images/iStockphoto
Cover: © paulbranding/stock.adobe.com,



E-T-A Elektrotechnische Apparate GmbH
Industriestraße 2-8 · 90518 ALTENDORF
GERMANY

Phone: +49 9187 10-0 · Fax +49 9187 10-397
E-Mail: info@e-t-a.de · www.e-t-a.de